

IFP8604P-AO 86" INTERACTIVE WHITEBOARD DISPLAY

MEETBOARD 4 PRIME

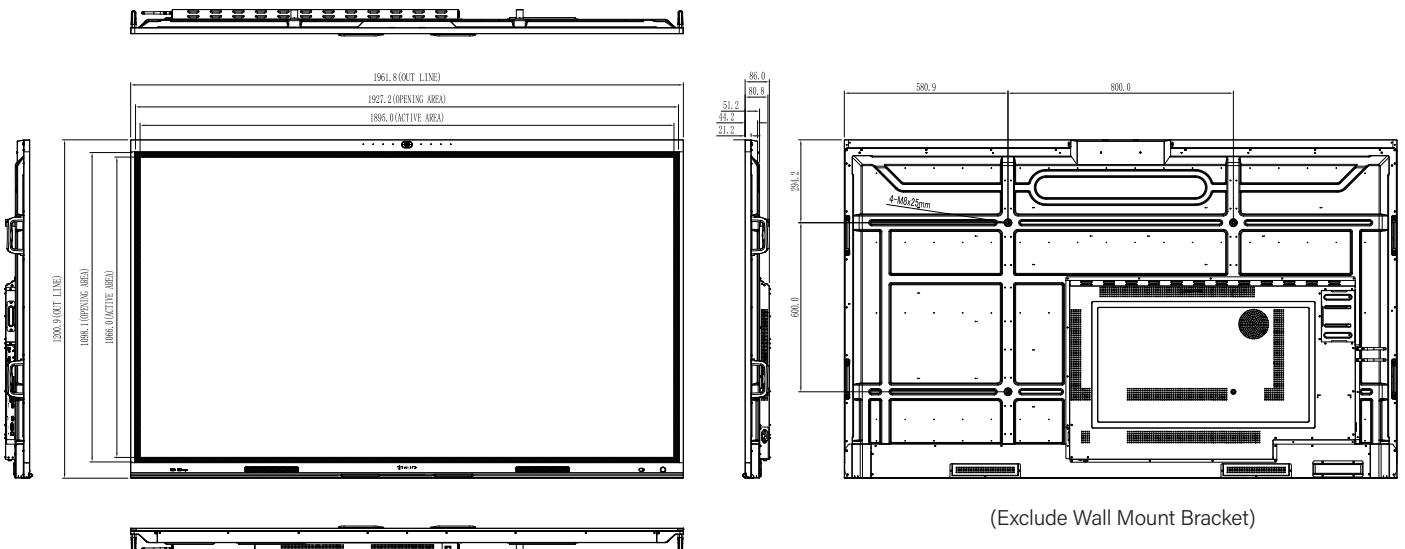


FEATURES

- Android 13.0 Platform with Google EDLA certification
- Google Play Access with all Google Services
- 4K UHD 3840 x 2160 resolution
- 128 GB storage + 8 GB memory
- 4K AI camera with auto-framing & sound tracking technology
- Dongle-free, pressure-sensitive active pen with built-in presentation controls
- IPS panel technology offers 400 nits high brightness and 178° wide viewing angles
- Incorporates IR touch technology with 40-point simultaneous multi-touch capability
- Built-in USB Type-C for faster transfer speeds and signal transmission
- Dual tips pen menu design for simultaneous annotation with two colors
- Integrated OPS Slot - Expand functionality with Windows OS
- Montage by DisplayNote for multi-display wireless screen sharing
- User-friendly whiteboard application for collaborative meetings
- Built-in Cloud Drive shortcut for account accessing and files sharing
- MeetCloud, online cloud whiteboard solution for remote teamwork discussion
- Embedded Wi-Fi 6 + Bluetooth Module
- Advanced Management and Security – App, USB and Samba service locks for easy management and secure access

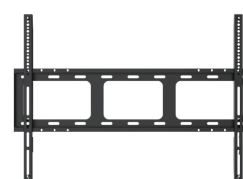
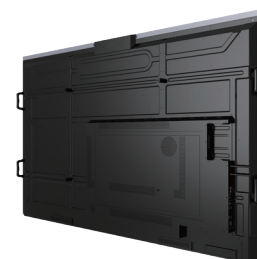
The IFP8604P-AO, a 86-inch MeetBoard 4 Prime Interactive Whiteboard Display, an advanced interactive display designed to revolutionize team collaboration and communication. Engineered to be the ultimate hub for modern workspaces, this display focuses on intuitive usability and seamless integration. It features Android 13.0 with EDLA Google services, 4K AI camera video conferencing capability, a built-in online cloud whiteboard solution with an active pen, and Montage multi-screen sharing. The Meetboard 4 Prime smart board integrates sleek design and state-of-the-art technology to enhance any space, whether it's a corporate office, IT environment, or creative studio.

TECHNICAL DRAWING



SPECIFICATIONS

| | |
|---------------------------------|---|
| Panel | |
| Panel Type | LED-Backlit TFT LCD (IPS Technology) |
| Panel Size | 85.6" |
| Max. Resolution | UHD 3840 x 2160 |
| Pixel Pitch | 0.494 mm |
| Brightness | 400 cd/m ² |
| Contrast Ratio | 1200 : 1 |
| Viewing Angle (H/V) | 178°/178° |
| Display Colour | 1.07G colors (10bits). |
| Response Time | 5 ms |
| Surface Treatment | Haze 25 %, 3H, Anti-Glare |
| Frequency | |
| Frequency (H) | 30 kHz-135 kHz |
| Frequency (V) | 30 Hz-76 Hz |
| Signal Input | |
| HDMI | 2.1 x 1 |
| Signal Output | |
| HDMI | 2.1 x 1 |
| External Control | |
| RS232 In | 9-Pin D-Sub |
| LAN | RJ45 x 2 |
| Embedded Player | |
| OS | Android 13.0 |
| CPU | Cortex A76+A55 |
| Memory | 8G |
| Storage | 128G |
| Other Connectivity | |
| USB | USB 3.0 x 5 (Media Playback), Type-C (PD:60W) |
| OPS Slot | Yes |
| Audio | |
| Audio Out | S/PDIF |
| Internal Speakers | 15W x 2 |
| Touch Screen | |
| Technology | Infrared Touch Frame |
| Positional Accuracy | ±1 mm |
| Panel Interface | USB (Type-B) |
| Single Touch Plug & Play | Windows 2000/XP/Vista/CE 6.0 macOS |
| Multi-touch Plug & Play | 40 point touch for Windows 7/8/10/11 |
| Multi-touch Support by Driver | 20 points for Android/Linux (kernel 3.5 above), Chrome 39 or above 20 point touch for macOS (supported by UPDD driver) |
| Integrated Camera | |
| Camera Resolution | 8M |
| Camera Pixel | 3840*2160(30fps) |
| Microphone | 8-Array |
| Power | |
| Power Supply | Internal |
| Power Requirements | AC100~240, 50 Hz~60 Hz |
| On Mode | 350W (On) |
| Standby Mode | < 0.5W |
| Off Mode | 0W |
| Glass | |
| Thickness | 3.2 mm |
| Gloss | ≤ 0.3um |
| Haze | 3%~8% |
| MOHS Hardness | 5 |
| Pencil Hardness | 8H |
| IK Rating | IK08 |
| Operating Conditions | |
| Temperature | 0°C-40°C (32°F-104°F) |
| Humidity | 20%-80% (non-condensing) |
| Storage Conditions | |
| Temperature | -20°C-60°C (-4°F-140°F) |
| Humidity | 10%-80% (non-condensing) |
| Mounting | |
| VESA FPMPMI | Yes (800 x 600 mm) |
| Dimensions | |
| Product w/o Bracket (W x H x D) | 1961.8 x 1200.9 x 123.9 mm (77.2" x 47.3" x 4.9") |
| Product w/o Bracket (W x H x D) | 1961.8 x 1200.9 x 86.0 mm (77.2" x 47.3" x 3.4") |
| Packaging (W x H x D) | 2160.0 x 1310.0 x 225.0 mm (85.0" x 51.6" x 8.9") |
| Weight | |
| Product w/o Bracket | 68.7 kg (151.4 lb) |
| Product with Bracket | 72.0 kg (158.7 lb) |
| Packaging | 81.4 kg (179.5 lb) |
| Regulation Approval | |
| Certifications & Compliance | FCC, ICES-003 Issue 7, CEC, RoHS, WEEE, REACH |
| Accessories | |
| Supplied | Power Cord, HDMI Cable, USB Cable, Remote Control, Batteries, Quick Start Guide, Active Pen, Stylus, Wall Mount, Wi-Fi / Bluetooth Module |
| Optional Accessories | |
| Floor Mount (Landscape only) | FMC-06, FMC-07 |



Wall Mount Bracket
(Pre-installed on display)



Active Pen



Stylus x 2



All specifications are subject to change without prior notice.
Copyright © 2025 AG Neovo. All rights reserved.
The name AG Neovo is a trademark of AIC.
All other trademarks are the property of their respective owners.
P/C: I84PA0 Version 1.0, 20250225